

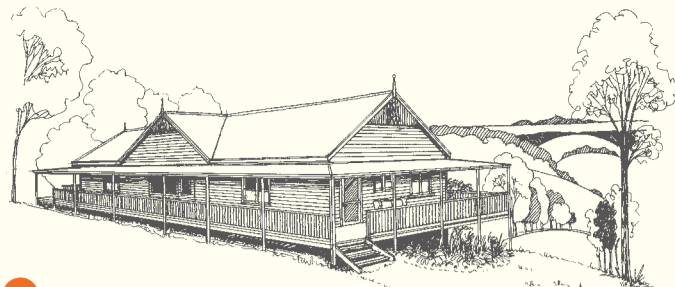


11
TILBA VALLEY WINES 5km north of Central Tilba, signposted off Highway, overlooking Lake Corunna. Wine tasting, cellar door sales, lunch and snacks. Oct to Apr open daily 10–5; May to Sept. open Wed-Sun 11am-4pm. Closed August. www.tilbavalleywines.com 02 4473 7308



3
TILBA LAKE HOUSE & LAKE CAMP Experience peace and relaxation in your own private oasis! Set on 11 acres with amazing ocean, lake and mountain views. Choose between private rooms or luxe camping in lotus belle tents. Enjoy a heated pool, fire pit & lovingly prepared breakfasts. Choose between private rooms or luxe camping in an eco-pod or bell tent. www.tilbalakehouse.com.au 02 4473 7777

TILBA TALKS — HISTORICAL WALKS
 Historical guided walk of Central Tilba. Be shown the stunning township for delightful photographic opportunities. Visit local produce and craft artisans. Visit the cheese factory and taste a selection of produce. Finish the afternoon at local shops/cafes for Devonshire Tea “Tilba Style”, with a pictorial overview of Central Tilba’s past. 0433 114 374



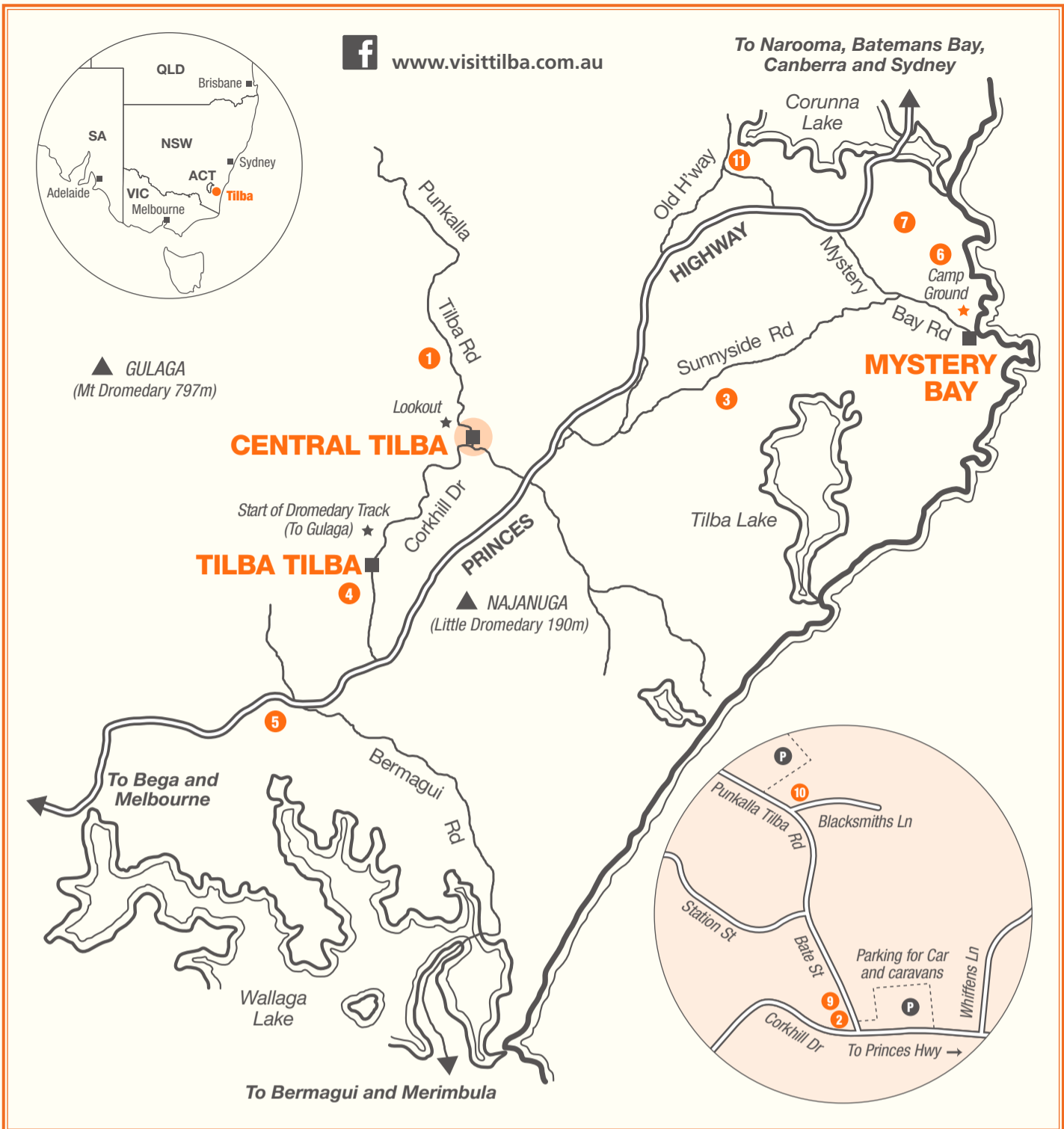
1
THE BRYN AT TILBA B & B Imagine... a separate residence for guests; 3 luxurious guest rooms; an elegant spacious living room; a sunny wrap-around verandah; spectacular views; 8 acres of tranquil park-like grounds – a home away from home! Free Wi-Fi. www.thebrynattilba.com.au 02 4473 7385



5
TILBA WATERFRONT COTTAGES 4 s/c cottages on 200 acre farm at edge of Wallaga Lake. Fishing, boat mooring, bushwalking, pets welcome. BYO linen and towels. Come to nature’s paradise. www.tilbawaterfrontcottages.com 02 4473 7322



(an2489764) Palace Hotel, now Dromedary Hotel, Central Tilba National Library of Australia photographs by William Henry Corkhill



EXPLORE TILBA’S LIVING HISTORY

Located 360km south of Sydney off the Princes Highway, the villages of Central Tilba and Tilba Tilba lie on the fertile slopes of Mount Dromedary (797m). On the coast, the Tilba area offers clean, uncrowded beaches and beautiful forested mountains.

Long before European settlement the indigenous Yuin tribe inhabited the Tilba area. The main landmark, “Gulaga” or mother mountain, is sacred to the Yuin people. In 1770 Captain Cook named it Mount Dromedary after observing its camel-like shape from his ship. Gulaga is the main cone of an extinct volcano which last erupted 90 million years ago. Najanuga (Little Dromedary) and Montague Island (Barunguba) are remnants of two smaller volcanic cones and also feature together in Yuin dreamtime.

Gold was discovered on Mount Dromedary in the late 1800s. The mountain is now a National Park. During the gold mining boom both Central Tilba and Tilba Tilba emerged as thriving townships. At its peak Central Tilba warranted a court house and police station along with numerous other services and businesses. With the decline of mining, Central Tilba remained viable due to dairying and the success of the Cheese Factory.

In the 1960s, through the efforts of the townspeople, the historical significance of the area was officially recognised; in 1974 the National Trust classified the villages in their entirety, thus preserving a unique part of Australia’s heritage. More recently Eurobodalla Council zoned Tilba Tilba and Central Tilba and their setting as the “Tilba Conservation Area.”

Today both villages are dedicated to tourism and hospitality. The ABC Cheese Factory is producing medal-winning dairy products with milk from their own farm. Local artists, craftspeople and purveyors of gourmet specialties also populate the villages.

Discover unique works in leather, wood and silver. Source locally produced candles and soaps. Buy authentic French pastries, chocolates, fudge, cheese, wine or condiments, all made in Tilba. Visit a tea shop or find a special gift or memento.

TILBA ADVENTURES

So much to do you could stay for days!

- ◆ Step back in time to explore the historic Tilba district and discover why it is now a Heritage Conservation Area.
- ◆ Browse through a treasure trove of galleries, shops and cafes. Indulge in local gourmet foods.
- ◆ Drive leisurely along scenic country roads from Tilba Tilba and Central Tilba to Narooma.
- ◆ Sample locally produced wines and Ploughman’s lunch at the Tilba Winery (see map).
- ◆ Swim, fish or walk the coast, Mystery Bay to Camel Rock. Or, enjoy passive water activities on our many beautiful waterways.
- ◆ Take a boat from Narooma to Montague Island (weather and tides permitting) to see the seal and penguin colonies and maybe whales.
- ◆ Enjoy the splendour of the most beautiful gardens on the South Coast at The Foxglove Gardens, Tilba Tilba.
- ◆ View a selection of “The Corkhill Collection,” a pictorial history of the Tilba area from the National Library, at ABC Cheese.
- ◆ Walk through rainforest to the summit of Gulaga (Mt Dromedary) – 5 hrs return from Pam’s Store, (La Galette Café), Tilba Tilba.
- ◆ Take a 5 minute walk to the ‘Water Tower Lookout’ at Central Tilba for a rewarding Panoramic view of the town, surrounding district and out to Montague Island.
- ◆ Dare to travel the ‘Bermagui Triangle’ taking in picturesque Cobargo, seaside Bermagui and back to historic Tilba.
- ◆ Watch cheese being made through the large viewing windows at ABC Cheese in Central Tilba (Mon, Wed, Fri). Cheese tastings too!
- ◆ Follow the Heritage Plaques erected on original buildings around the two towns for a glimpse of life in early Tilba or take a Tilba Talks, historical walk (see elsewhere in this brochure).

TILBA TILBA VILLAGE

Foxglove @ Tilba Accommodation



4
 Foxglove @ Tilba offers luxury accommodation with a range of charming rooms and property options. From our beautifully appointed French provincial style King and Queen rooms, to our cozy self-contained cottages. Foxglove is idyllically located on 5 acres of beautiful open gardens in the heart of Tilba Tilba, just a short drive to the beach and at the foothills of Mt Dromedary, a dramatic backdrop against Tilba’s rolling hills leading down to the amazing coastline.
 For bookings: www.thefoxglovegardens.com — info@foxglovegardens.com 02 4473 7375

Henry Bate moved to the area in 1864 and took up land on the slopes of Mt Dromedary, where he built Mountain View homestead. Here he provided a room for church services, until 1881, when a church was erected. Henry began building houses and shops for lease near his Mountain View homestead and by 1880, Tilba Tilba, as the village was named, possessed two stores and a hotel.
 In the mid 1890’s land was auctioned off for houses and shops, in the area which is now the village of Central Tilba, 2km north of Tilba Tilba.



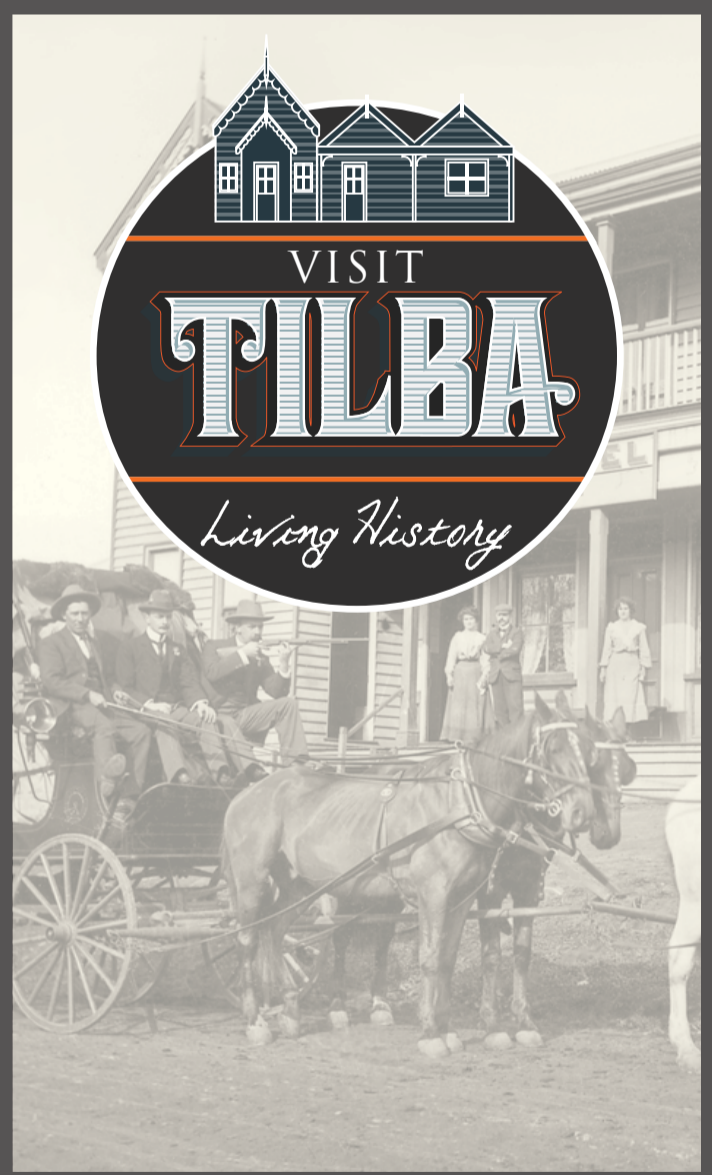
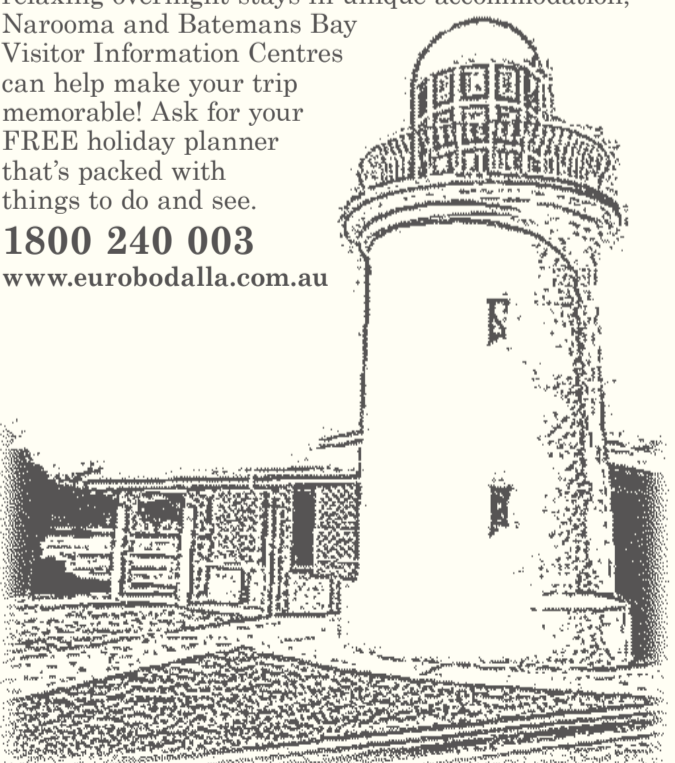
(an2475178) Commercial traveller for Robert Reed and Co. Ltd. at the Temperance Hall, Tilba Tilba National Library of Australia photographs by William Henry Corkhill



LA GALETTE A traditional French cafe featuring Galettes – gluten free buckwheat flour savoury crepes traditionally made in Brittany. We offer also the best coffee, sweet crepes and French patisseries, using high quality produce of the Tilba area. Closed on Mondays. 02 4473 7084

DISCOVER EUROBODALLA

From a trip to world famous Montague Island, snorkelling with seals, amazing headland walks to relaxing overnight stays in unique accommodation, Narooma and Batemans Bay Visitor Information Centres can help make your trip memorable! Ask for your FREE holiday planner that’s packed with things to do and see.
1800 240 003
 www.eurobodalla.com.au



CENTRAL TILBA & TILBA TILBA
NATIONAL TRUST VILLAGES

STAY AT TILBA

~ Bed and Breakfast

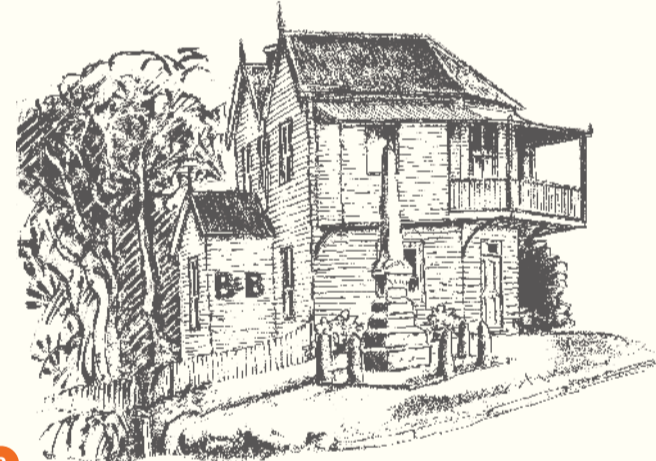
- 1 THE BRYN AT TILBA B & B**
On 8 acres overlooking Tilba. Panoramic views to Montague Island – 02 4473 7385
- 2 THE TWO STORY B & B**
Built 1894, homestyle accommodation, relaxing atmosphere. Hosts Ken and Linda – 02 4473 7290
- 3 TILBA LAKE HOUSE & LAKE CAMP**
Enjoy peace and relaxation with stunning ocean, lake and mountain views – 02 4473 7777
- 4 FOXGLOVE @ TILBA**
An elegant B&B built in 1904 with luxury self-contained cottages in the amazing Foxglove Gardens – 02 4473 7375

~ Cottages and Cabins

- 5 TILBA WATERFRONT COTTAGES**
4 self-contained cottages on 200 acres on Wallaga Lake. Pets welcome – 02 4473 7322
- 6 MYSTERY BAY COTTAGES**
“We’ve discovered some breathtaking places, Mystery Bay Cottage will be remembered as one of the best” *Sun Herald* – 02 4473 7431
- 7 OAKLEIGH FARM COTTAGES**
Walk to the beach, ocean and Montague Island views, pet friendly, Mystery Bay – (02) 4473 7219

More information on Tilba Stays throughout this brochure and at www.visittilba.com.au

Follow the **‘HERITAGE PLAQUES’** erected on original buildings around the two villages for a glimpse of life in earlier times.



2 THE TWO STORY B&B In the original post office and residence, built 1894. Wide picturesque views, home away from home atmosphere. Full breakfast and treats. Email: stay@tilbatwostory.com www.tilbatwostory.com 02 4473 7290

9 BATES EMPORIUM STORE & POST OFFICE Built 1894 as residence, general store & post office as it is today, also with petrol, souvenirs, tourist information, *Mrs Jamieson's Famous Tilba Fudge*, and a range of old worldly curiosities. 02 4473 7290



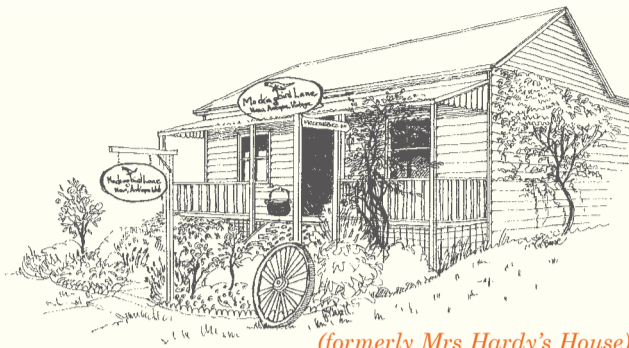
THE HERITAGE TEA ROSE presents over 200 teas & the largest selection of teapots and tea ware on the South Coast. Freshly prepared Devonshire Teas daily, using locally produced ingredients where available. Open 7 days for gifts and elegant indulgence. 02 4473 7209

Parts of Tilba are wheelchair accessible

CENTRAL TILBA VILLAGE

National Trust Classified Village

www.facebook.com/visittilba/ www.visittilba.com.au www.instagram.com/visit_tilba/

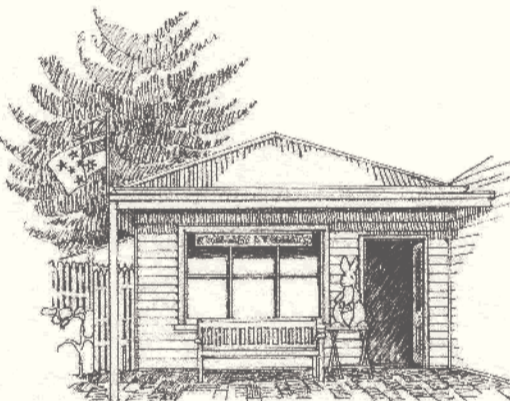


(formerly Mrs Hardy's House)

MOCKINGBIRD LANE – with a focus on Australian creativity and design, be inspired by an eclectic mix of decorative items for the home. Jewellery, accessories and locally made clothing, combine beautifully with vintage pieces, all housed in an original cottage. 02 4473 7226



DROMEDARY HOTEL – A warm welcome awaits at one of the south coast's most iconic pubs, built in 1895. Great food and drink served every day. Join us in our cosy bar or dining room, find a table in our backyard or watch the world go by from our sunny veranda. 02 4473 7223



WALLABY & WOMBAT Affordable Australian-made gifts and souvenirs. Children's activities, homewares, T-shirts, timber items, picture books, stationery, jewellery, boomerangs and more. Next to Bakery. 02 4473 7379



ARCADIA IN TILBA Arcadia crafted sterling silver jewellery, Alpaca and wool clothing, woven baskets, homewares, rugs and kilims. Colourful gifts for yourself and loved ones. Fair trade and ethically sourced locally and abroad. Supporting traditional cultures. Open daily. 02 4473 7574



(formerly No. 24 Bate Street)

TILBA LEATHER Experience the timeless aroma of real leather in this original cottage, full of quality handmade leather goods and unique comfort shoes. Saddler and leather craftsman on hand. Open 7 days. E: tilbaleathershop@gmail.com 02 4473 7360

Tilba Market

Saturdays 8 am-12 pm
in the Big Hall, Central Tilba.

Every week a wonderful range of fresh produce and preserves, home baked, home grown and locally handcrafted items.

Follow us on Facebook and Instagram.



10 (First Cheese Co-op in NSW – est. 1891)

ABC CHEESE FACTORY has a breath of new life. Local farmers bring back the age-old tradition of cheese making to this historic site. Pure, creamy jersey milk, straight from the cow, ice creams, milk shakes, coffee and a large range of local honeys and condiments is available. ABC Cheese Factory is also the home of “Tilba Real Dairy”, a range of delicious award-winning dairy products manufactured in Central Tilba and sold in NSW and the ACT. Come and sample our quality Australian made produce straight from the farm to you. 02 4473 7387



(formerly Arthur Caffin's Butcher shop)

BATH PATISSERIE built in the late 1890s, now home to a beautiful soap and gift shop with an amazing array of handmade natural soap and bath products. www.bathpatisserie.com.au 02 4473 7722



PASSIONFISH CANDLES & GIFTS – the latest building in town built by the candlemakers themselves... Passionfish has been crafting handmade soy candles since 2007. Experience the sense of Tilba in your own home. Open 7 days. www.passionfish.com.au 02 4473 7714



(formerly Molly's Place)

reva built in 1898, the shop features exclusive handmade jewellery from all over Australia and Europe. Breathtakingly beautiful and unique, a must see! www.revaatilba.com 02 4473 7606



TILBA WOODTURNING GALLERY est. 1985 and built on the original stone foundations of the old blacksmith's shop. This award-winning gallery features a superb collection of the finest woodwork in Australia. Open 7 days. 02 4473 7355



TILBA CHOCOLATES – be tempted by a variety of the finest handcrafted chocolates made from Belgium couverture chocolate. Relax in the Espresso bar with your gourmet chocolates or take a selection home as a special gift. 02 4473 7761



TILBA TEAPOT CAFE – drop in and be pleasantly surprised by our beautiful breakfasts, luscious lunches and delightful house made delicacies, using fresh local produce. Of course we serve great coffee and tea and also cater for High Teas and other functions. Closed Tuesdays. 02 4473 7948



TILBA TRICKS Tilba's first “new” building, built 1983, in the style of the original. A large array of games, toys jigsaws, and puzzles to amuse children and adults of all ages. Open 7 days courtesy of Roy & Liz. 02 4473 7672



(formerly The Fingerpost Store)

SAPPHIRE BLUES offers a stylish and elegant range of home décor and giftware. Quilts, linen, china, furniture, kitchenware, lamps, jewellery, baby wear and plush toys. Beautiful things to give or to keep. www.sapphireblues.com.au 02 4473 7696

EAT AT TILBA

~ Meals plus...

- DROMEDARY HOTEL**
A warm welcome awaits at this iconic pub. Great food. Lunch and dinner served daily – 02 4473 7223
- TILBA TEAPOT CAFE**
Beautiful breakfasts, luscious lunches, delightful house-made delicacies. Closed Tues. – 02 4473 7948
- LA GALETTE**
Traditional cafe serving delicious sweet and savoury crepes, French patisseries and great coffee. 02 4473 7084
- TILBA VALLEY WINES**
Lunch and snacks – wine tastings and cellar door sales. Overlooking Lake Corunna. Closed August. 02 4473 7308

~ Coffee, tea and more...

- BATES EMPORIUM STORE**
Good coffee and *Mrs Jamieson's Famous Fudge*. 02 4473 7290
- HERITAGE TEA ROSE**
Devonshire Teas and sweet treats. Delicious home-made soups in Winter – 02 4473 7209
- ABC CHEESE**
Milkshakes, coffee and tea made with our creamy Jersey milk and a range of ice-cream – 02 4473 7387
- TILBA CHOCOLATES**
Beautiful coffee and handcrafted Chocolates locally made from the finest Belgium chocolate – 02 4473 7761
- TILBA SWEET SPOT**
Sundaes, milkshakes, ice-creams, cakes and awesome coffee – 02 4473 7099
- HEALTHY HEMP HUB**
Hemp seed smoothies, traditionally brewed chai, organic coffee, treats and more – 02 4473 7233



(formerly No. 11 Bate Street)

THE TILBA SWEET SPOT is in the original Tilba cobbler's shop, built in 1895. Trading since 1995 as an Old Time Lolly Shop, it boasts the largest range of confectionary in NSW. Find all your childhood favourites here. 02 4473 7099

The Tilba Sweet Spot now includes a stunningly themed, retro-fitted Ice-creamery and coffee shop. Sundaes, milkshakes, ice-creams and of course awesome coffee. www.tilbasweetspot.com.au Or visit us on [facebook.com/tilbasweetspot](https://www.facebook.com/tilbasweetspot).



(formerly Patmore's Butcher Shop)

GULAGA GALLERY & BOOKSTORE built 1895. Hemp clothes to make a skinny bloke handsome, Hip clothes to make a fat lady sing...Enlightening books and cards that are awesome. Handcrafted jewellery and that special thing! Open 7 days. 02 4473 7233

THE HEALTHY HEMP HUB – enjoy our sunny back room and deck where you'll find nourishing hemp seed smoothies, traditionally brewed chai, organic coffee, yummy treats and more.

Tilba's two villages provide an exciting combination of boutique shops and galleries, tasty regional fare and magnificent views, all packaged in a romantic heritage setting. See more at www.visittilba.com